

Screw Press

Applications

Industry:

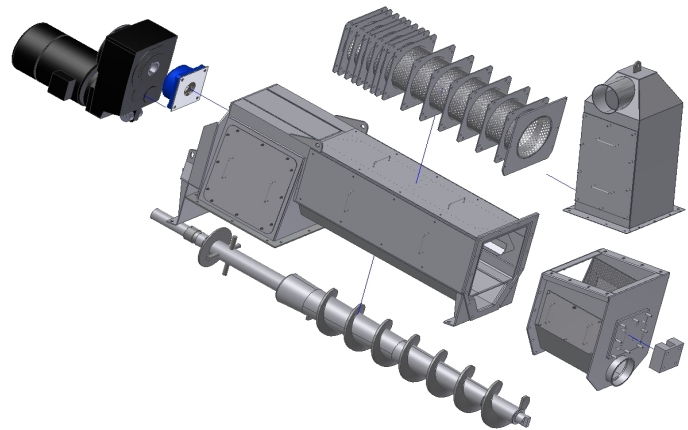
Foodstuffs, Chemicals, Pharmaceuticals, Biomass, Plastics, Paper, Pet food, Hen slaughterhouses and many others.

Advantages:

Compact; accurate; versatile; low maintenance; robust design; continual process; little fouling on the press basket due to conical perforation; long service life.

Versions:

Conventional screw press or a version with a shaftless ribbon. Basket can be cleaned quickly via access hatches. Our experts are always ready to answer your questions.



3-D structure of a conventional press



Heavy duty meat press (dewatering)

Description

Over the years, Klinkenberg has amassed considerable experience of dewatering a variety of products. The result is evident in the design of our highly robust screw presses! One design is conventional, the other is a shaftless pressing screw. The capacities depend greatly on the product that is to be dewatered. We will be happy to speak with you.

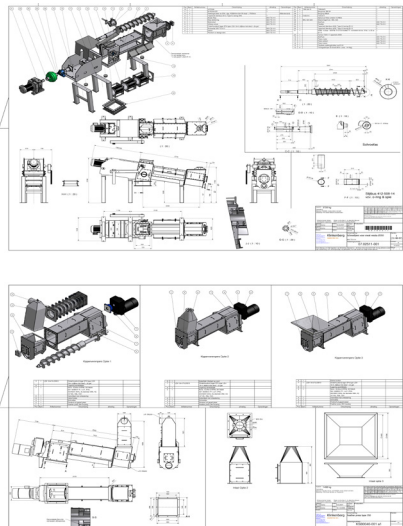
Application:

Klinkenberg crew presses are used to remove the water from mixtures of solids and water. The product is fed to the press via a funnel. A dewatering section is placed under the funnel so that most of the water is separated before the pressing starts. In the press section, pressure is built up so that the remaining water is separated from the solids.



Dewatering Press for chicken feathers with a capacity of 5000 to 12,000 chickens per hour

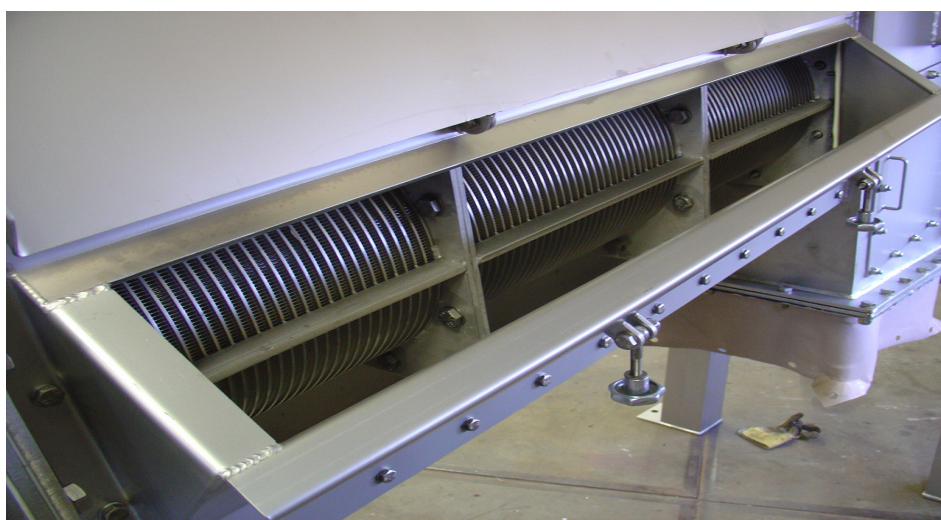
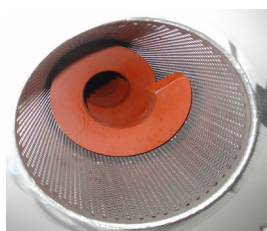
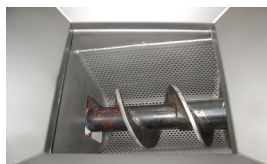
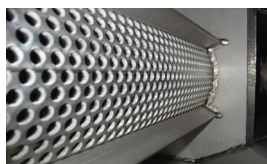
3D Engineering



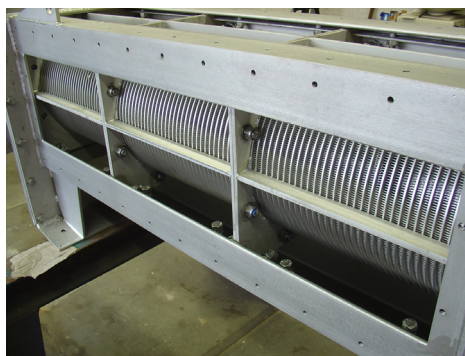
Data

| Model | Press Length | Capacity | Material |
|----------------|--------------|------------------|----------|
| KSP-250 | 600 mm | / 500 kg/h | CS / SS |
| KSP-300 | 1000 mm | 500 / 1000 kg/h | CS / SS |
| KSP-350 | 1500 mm | 1000 / 3000kg/h | CS / SS |
| KSP-400 | 1650 mm | 3000 / 5000 kg/h | CS / SS |
| KSP-450 | 1850 mm | 5000 / 7000 kg/h | CS / SS |

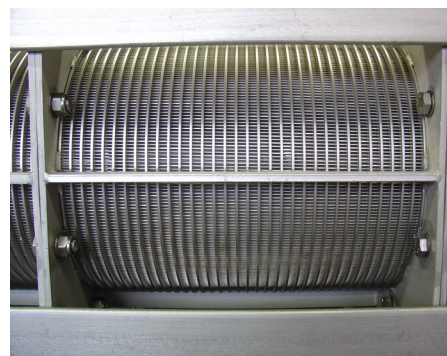
Versions / Options



Cleaning Liege for quick cleaning of the press hive



Base frame with press hive



Press Basket